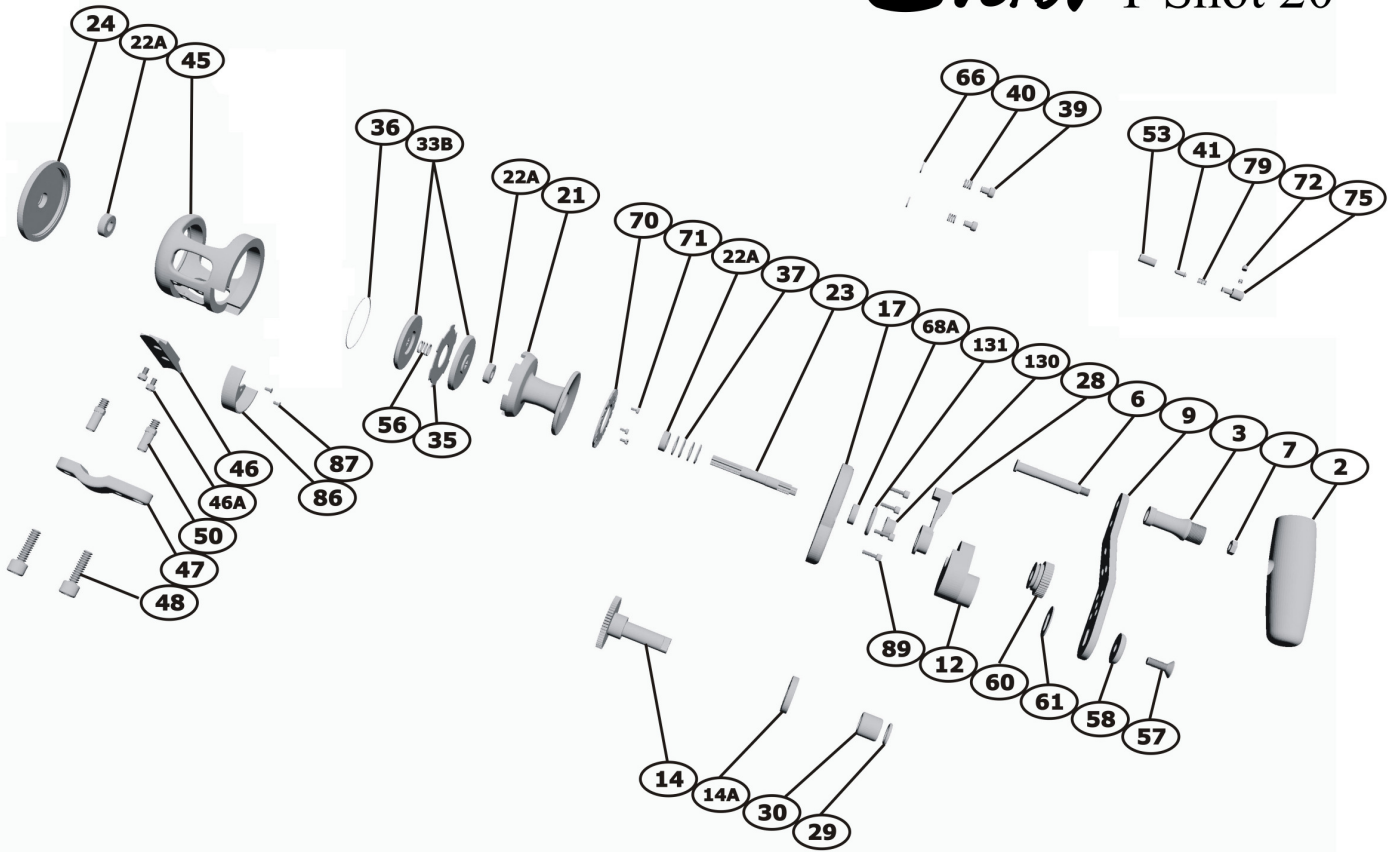


# Everol T-Shot 20



- |     |                        |     |                        |     |                                   |
|-----|------------------------|-----|------------------------|-----|-----------------------------------|
| 1   | Handle Assembly        | 30  | Anti Reverse Bearing   | 58  | Handle Washer                     |
| 2   | Handle Knob            | 33B | Carbon Fiber Drag Disk | 60  | Pre Set Button                    |
| 3   | Handle Tube            | 35  | Winged Disk            | 61  | Slotted Washer                    |
| 6   | Handle Shaft           | 36  | Drag Loc-Spring Ring   | 63  | Pawl Spring                       |
| 7   | Handle Nut             | 37  | Drag Spring            | 64  | Pawl Pin                          |
| 9   | Handle Slide Plate     | 39  | Strike and Free Button | 66  | Stop Spring-Lock Ring             |
| 12  | Gear Housing           | 40  | Stop Spring            | 68A | Ball Bearing                      |
| 14  | Main Gear              | 41  | Clicker Striker        | 70  | Clicker Striker Plate             |
| 14A | Main Gear Ball Bearing | 43  | Harness Lug            | 72  | Clicker Release Button And Spring |
| 15  | Anti Reverse Pawl      | 45  | One-Piece Frame        | 75  | Clicker Selector                  |
| 16  | Pawl Shaft             | 46  | Reel Stand             | 79  | Striker Spring                    |
| 17  | Right Side Plate       | 46A | Reel Stand Screw       | 86  | Main Gear Carter                  |
| 21  | Spool                  | 47  | Rod Clamp              | 87  | Carter Screw                      |
| 22A | Ball Bearing           | 48  | Clamp Screw            | 89  | Allen Screw                       |
| 23  | Pinion Shaft           | 50  | Collar Nut             | 130 | Drag Cam                          |
| 24  | Left Side Plate        | 53  | Striker Pipe           | 131 | Lever Drag O-ring                 |
| 28  | Drag Lever             | 56  | Pinion Gear Spring     |     |                                   |
|     |                        | 57  | Handle Screw           |     |                                   |