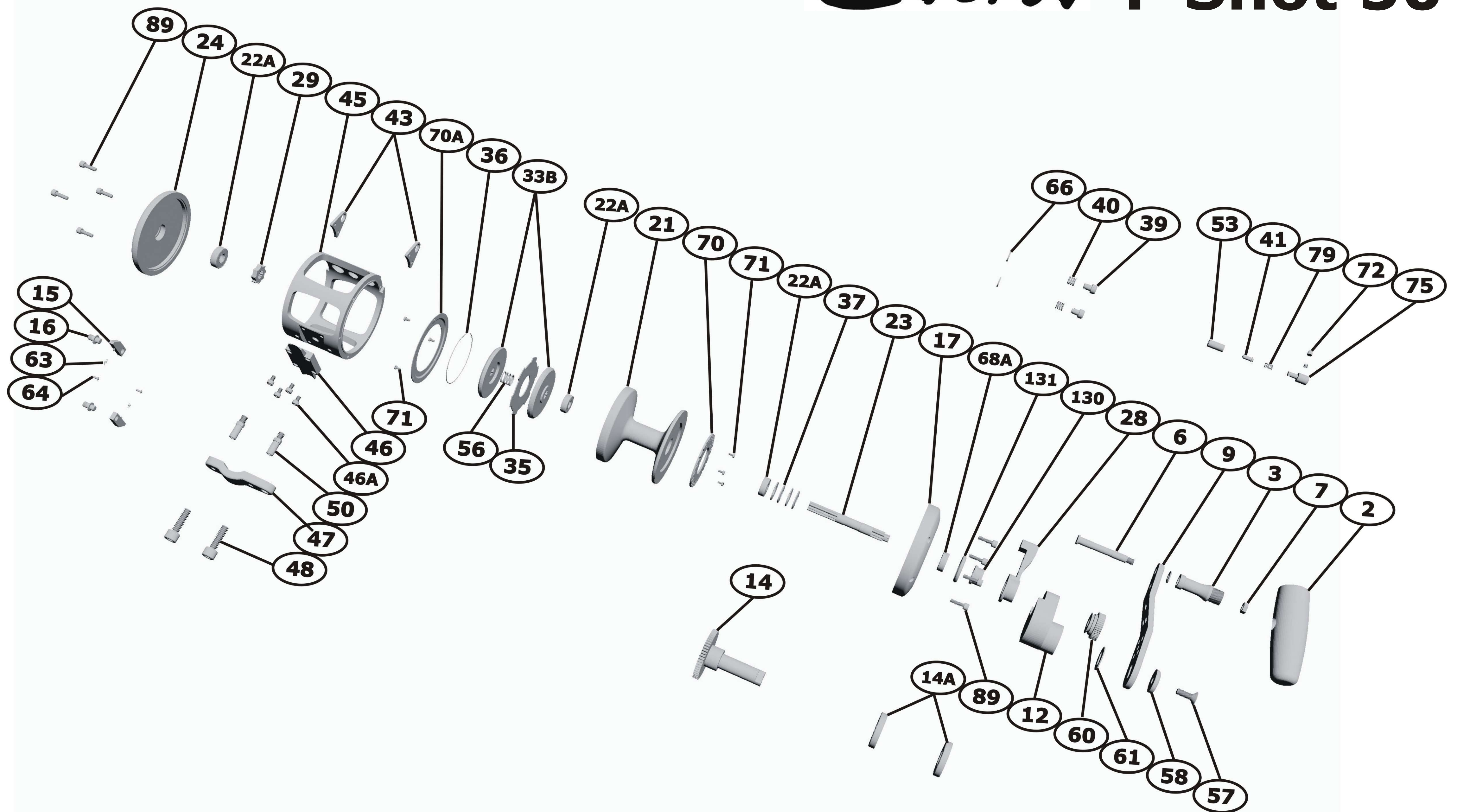


Everol T-Shot 50



- | | | |
|----------------------------|-----------------------------|--------------------------------------|
| 2 Handle Knob | 33B Carbon Fiber Disk Drag | 58 Handle Washer |
| 3 Handle Tube | 35 Winged Disk | 60 Pre Set Button |
| 6 Handle Shaft | 36 Internal Loc-Spring Ring | 61 Slotted Washer |
| 7 Shaft nut and washer | 37 Drag Spring | 63 Pawl Spring |
| 9 Handle Slide Plate | 39 Strike and Free Button | 64 Self Tapping Screw |
| 12 Gear Housing | 40 Stop Springs | 66 Stop Spring-Lock Ring |
| 14 Main Gear | 41 Clicker Striker | 68A Ball Bearing |
| 14A Main Gear Ball Bearing | 43 Harness Lug | 70 Clicker Striker Plate |
| 15 Antireverse Pawl | 45 One-Piece Frame | 70A Drag cover |
| 16 Pawl Shaft | 46 Reel Stand | 71 Striker Plate Screw |
| 17 Right Side Plate | 46A Reel Stand Screw | 72 Clicker Release Button And Spring |
| 21 Spool | 47 Rod Clamp | 75 Clicker Selector |
| 22A Ball Bearing | 48 Clamp Screw | 79 Striker Spring |
| 23 Pinion Shaft | 50 Collar Nut | 89 Allen Screw |
| 24 Left Side Plate | 53 Striker Pipe | 130 Drag Cam |
| 28 Lever Drag | 56 Pinion Gear Spring | 131 Lever Drag Oring |
| 29 Antireverse | 57 Handle Screw | |